



## PTW ASIA PTE LTD

ASM International A412 Doped Poly Vertical LPCVD Furnace	
Manufacturer	ASM
Model	A412
Product Description	Vertical LPCVD Furnace
Year of Manufacture	TBD
Serial Number	30271
Wafer Size	300mm
Software version	6.80C
Heater Type	MRL
Loader configuration, 4 or 5 loader - 4	
Quartzware Configuration	
Outer tube	Quartz
Inner tube	Quartz
Boat	SiC boat
Boat fix ring/Cap quartz	Quartz
Adiabatic plate quantity	6
Back N2, Qty	N/A
BCl3, Qty & Type (L-type, Straight, Diffuser, Shower)	N/A
SiH4, Qty & Type (L-type, Straight, Diffuser, Shower)	Multihole (1) U/D/L
O2, Qty & Type (L-type, Straight, Diffuser, Shower)	Multihole (1) E
PH3, Qty & Type (L-type, Straight, Diffuser, Shower)	Multihole (1) U/D/L
ClF3, Qty & Type (L-type, Straight, Diffuser, Shower)	N/A
Vacuum Line configuration	
Design	original config
10 Torr Baratron model	MKS
10 Torr Baratron full scale setting	10(F/S)
1000 Torr Baratron model	MKS

This data sheet is provided to you on a strictly confidential basis and contains commercially sensitive and valuable information. No part of its content may be provided to any person without our prior written consent. This data sheet is not an offer capable of acceptance. The information contained in this data sheet is, to our knowledge and information, accurate, but it may contain typographical errors and we do not warrant the completeness or accuracy of the information contained herein. Any offer by you to purchase of the equipment described in this data sheet shall be subject to our standard terms and conditions of sale. The Equipment being quoted is described as used, and is being sold "AS IS, WHERE IS" with all defects, known or unknown, entirely at Buyer's own risk and reliance solely upon Buyer's own inspection of the goods and without reliance upon any representation or description by Seller or seller's representative concerning the goods.

1000 Torr Baratron full scale setting	1000(F/S)
ATM sensor model	MKS
Vent Valve 1 (VV1) normally closed/open,plunger, diaphragm	Normally open,plunger Check valve model
Check valve model	Fujikin
Check valve resistance pressure	2.26 Kpa
Mainvalve type, Kitz or CKD	MKS
Slow valve, incorporated with mainvalve or separate(AV72,AV77)	Separate (PV003)
Slow valve orifice size	2.0mm (PV003)
Pressure range of vacuum gauge(Inficon Pirani gauge)	10T
<b>Control Table</b>	
Alarm Watch/Table setting	
Temp (Low Alarm Limit(deg)/High Alarm Limit(deg)/Check Time(min))	
U	0.7/0.7/30S
CU	0.7/0.7/30S
C	0.7/0.7/30S
CL	0.7/0.7/30S
L	0.7/0.7/30S
Pressure (Low Alarm Limit(Torr)/High Alarm Limit(Torr)/Check Time(S))	0.02/0.02/30S
<b>MFC (Low Alarm Limit(%)/High Alarm Limit(%)/Check Time(S))</b>	
MFC1	N2: 2%/2%/10sec
MFC2	N2: 2%/2%/10sec
MFC3	N2: 2%/2%/10sec
MFC4	N2: 2%/2%/10sec
MFC5	SiH4: 2%/2%/10sec
MFC6	SiH4: 2%/2%/10sec
MFC7	SiH4: 2%/2%/10sec
MFC8	1%O2/Ar: 1%/1%/10sec
MFC9	5%PH3/N2: 2%/2%/10sec
MFC10	5%PH3/N2: 2%/2%/10sec
MFC11	5%PH3/N2: 2%/2%/10sec
MFC12	ClF3: 10%/10%/10sec
MFC13	N/A
MFC14	N/A
MFC15	N/A
MFC16	N/A
MFC17	N/A

This data sheet is provided to you on a strictly confidential basis and contains commercially sensitive and valuable information. No part of its content may be provided to any person without our prior written consent. This data sheet is not an offer capable of acceptance. The information contained in this data sheet is, to our knowledge and information, accurate, but it may contain typographical errors and we do not warrant the completeness or accuracy of the information contained herein. Any offer by you to purchase of the equipment described in this data sheet shall be subject to our standard terms and conditions of sale. The Equipment being quoted is described as used, and is being sold "AS IS, WHERE IS" with all defects, known or unknown, entirely at Buyer's own risk and reliance solely upon Buyer's own inspection of the goods and without reliance upon any representation or description by Seller or seller's representative concerning the goods.

MFC18	N/A
MFC19	N/A
MFC20	N/A
MFC21	N/A
APC Valve Action (High (%), Low (%), Time(s))	N/A
Transfer Table	
Wafer Charge command (charge/discharge)	
Side Dummy	Upper:5 / Lower:10
Product	100
Monitor	5
Product & Monitor	105
Time	
2nd charge time(min)	0
wafer cool time(min)	20min
Leak Rate Table	
Base pressure low Limit(Torr)	1%
Base pressure High Limit(Torr)	1%
Leak Check check time(s)	60s
Leak Check delay time(s)	N/A
Leak limit(Torr)	1%
Retry Limit(count)	2
Loadlock Settings	
Loadlock configuration	
O2 analyser model, NGK or Toray	PBI3.1 / PBI4.0
Process	
L/A Keep Value (ppm)	10ppm
N2 Flow max (L)	1300L
N2 Flow min (L)	300L
Check Stability Time(s)	N/A
Ready	
L/A Keep Value (ppm)	10ppm
N2 Flow max (L)	1300L
N2 Flow min (L)	300L
Check Stability Time(s)	N/A
Idle	
L/A Keep Value (ppm)	10ppm
N2 Flow max (L)	1300L
N2 Flow min (L)	300L
Check Stability Time(s)	N/A
L/A O2 check time (min)	N/A

This data sheet is provided to you on a strictly confidential basis and contains commercially sensitive and valuable information. No part of its content may be provided to any person without our prior written consent. This data sheet is not an offer capable of acceptance. The information contained in this data sheet is, to our knowledge and information, accurate, but it may contain typographical errors and we do not warrant the completeness or accuracy of the information contained herein. Any offer by you to purchase of the equipment described in this data sheet shall be subject to our standard terms and conditions of sale. The Equipment being quoted is described as used, and is being sold "AS IS, WHERE IS" with all defects, known or unknown, entirely at Buyer's own risk and reliance solely upon Buyer's own inspection of the goods and without reliance upon any representation or description by Seller or seller's representative concerning the goods.

L/A O2 limit (ppm)	10ppm
POD opener O2 limit (ppm)	N/A
POD O2 check time(min)	N/A
POD check retry	N/A

**Missing/Damaged Parts List:**  
**None report, please inspect tool to reconfirm**

### Micron FAB11 AUDPBC0500(LPDG204 30271)



This data sheet is provided to you on a strictly confidential basis and contains commercially sensitive and valuable information. No part of its content may be provided to any person without our prior written consent. This data sheet is not an offer capable of acceptance. The information contained in this data sheet is, to our knowledge and information, accurate, but it may contain typographical errors and we do not warrant the completeness or accuracy of the information contained herein. Any offer by you to purchase of the equipment described in this data sheet shall be subject to our standard terms and conditions of sale. The Equipment being quoted is described as used, and is being sold "AS IS, WHERE IS" with all defects, known or unknown, entirely at Buyer's own risk and reliance solely upon Buyer's own inspection of the goods and without reliance upon any representation or description by Seller or seller's representative concerning the goods.

## Tool Status

R1 SCS

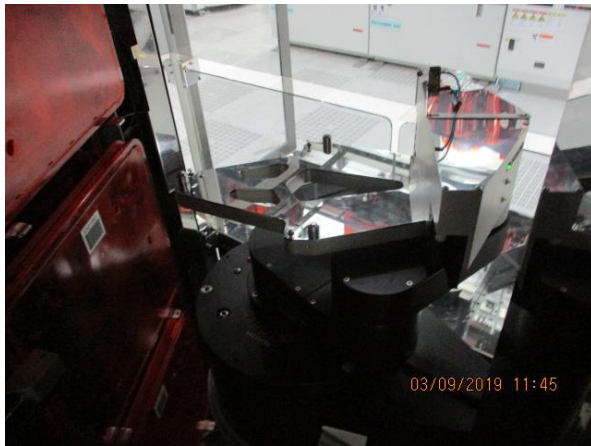


R2 SCS



## Robot Status

CHR



WHR



## Power Supply Brake

R1



R2



This data sheet is provided to you on a strictly confidential basis and contains commercially sensitive and valuable information. No part of its content may be provided to any person without our prior written consent. This data sheet is not an offer capable of acceptance. The information contained in this data sheet is, to our knowledge and information, accurate, but it may contain typographical errors and we do not warrant the completeness or accuracy of the information contained herein. Any offer by you to purchase of the equipment described in this data sheet shall be subject to our standard terms and conditions of sale. The Equipment being quoted is described as used, and is being sold "AS IS, WHERE IS" with all defects, known or unknown, entirely at Buyer's own risk and reliance solely upon Buyer's own inspection of the goods and without reliance upon any representation or description by Seller or seller's representative concerning the goods.



TCP/ECP

R1

R2



Supply Gas Status



Gas Flow Panel Status

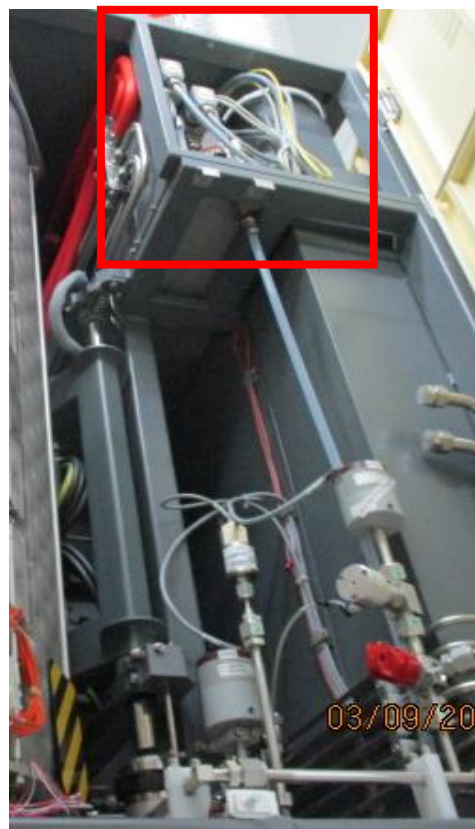


This data sheet is provided to you on a strictly confidential basis and contains commercially sensitive and valuable information. No part of its content may be provided to any person without our prior written consent. This data sheet is not an offer capable of acceptance. The information contained in this data sheet is, to our knowledge and information, accurate, but it may contain typographical errors and we do not warrant the completeness or accuracy of the information contained herein. Any offer by you to purchase of the equipment described in this data sheet shall be subject to our standard terms and conditions of sale. The Equipment being quoted is described as used, and is being sold "AS IS, WHERE IS" with all defects, known or unknown, entirely at Buyer's own risk and reliance solely upon Buyer's own inspection of the goods and without reliance upon any representation or description by Seller or seller's representative concerning the goods.

Heater Status

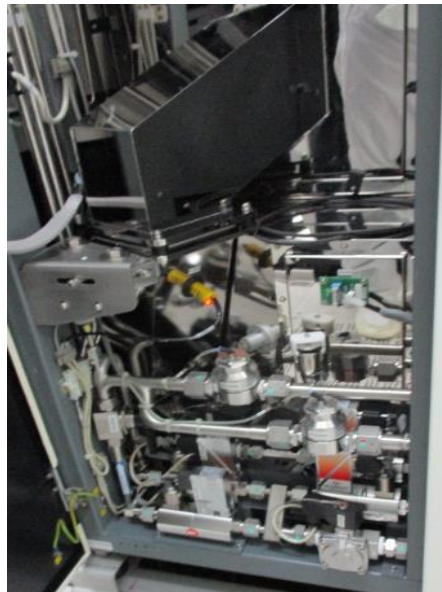


TCF Status



This data sheet is provided to you on a strictly confidential basis and contains commercially sensitive and valuable information. No part of its content may be provided to any person without our prior written consent. This data sheet is not an offer capable of acceptance. The information contained in this data sheet is, to our knowledge and information, accurate, but it may contain typographical errors and we do not warrant the completeness or accuracy of the information contained herein. Any offer by you to purchase of the equipment described in this data sheet shall be subject to our standard terms and conditions of sale. The Equipment being quoted is described as used, and is being sold "AS IS, WHERE IS" with all defects, known or unknown, entirely at Buyer's own risk and reliance solely upon Buyer's own inspection of the goods and without reliance upon any representation or description by Seller or seller's representative concerning the goods.

## N2 Purge Source Line



## Software Versions

Software versions							
Software release		6.80D					
Tool controllers							
	Model	Version		Date			
MSC	A412	7.13		28-May-18			
VHC	A412	8.02		11-Oct-11			
CHK	A412	5.10		12-Oct-11			
BTC	A412	2.05		03-Feb-11			
Tube controllers							
T1 LPGA304A				T2 LPGA204B			
	Model	Version	Date		Model	Version	Date
DPC	A412	2.W2	28-Sep-11	DPC	A412	2.W2	28-Sep-11
DTC				DTC			
MTC	A412PN	2.23	04-Feb-11	MTC	A412PN	2.23	04-Feb-11
Robot controllers							
	Serial#		Version		MCL Version		DEE Version
VHRL	806066		GB45-4.29A		2.93		
CHR	120516		GB4-4.03FC		2.25		

## Digital I/O R1

Recipe status											
Recipe:STDB_PR7										Step# 4	
Digital Inputs						Digital Outputs					
Nr	Name	Status	Nr	Name	Status	Nr	Name	Status	Nr	Name	Status
1	N2-Press	OK	17	PmpWarn	OK	1	SH4-D	CLOSED	17	PresOnly	LOW
2	CA-Press	OK	18	PmpAlarm	OK	2	SH4-L	CLOSED	18	FastPump	CLOSED
3	EnrGasC	OK	19			3	SH4-U	CLOSED	19	SlowPump	OPEN
4	RecdPrs	+12TORR	20	MainMod	AUTOMATIC	4	PH3-D	CLOSED	20	By-StPH	CLOSED
5	PmpPrs	OK	21	CtrlRem	AUTOMATIC	5	PH3-L	CLOSED	21	PH3-LM	LOW
6			22			6	PH3-U	CLOSED	22	SH4-Src	CLOSED
7	ProcIntr	PROCNTR	23			7	O2	CLOSED	23	O2-M	CLOSED
8	GasDoors	CLOSED	24			8	FlgTmplw	HIGH	24	Prp-CF3	CLOSED
9	PmpTnp	OK	25			9	N2-D	CLOSED	25	Prp-SH4	CLOSED
10	ExhReact	OK	26			10	N2-L	CLOSED	26	PH3-Prp	CLOSED
11	TubeDoor	CLOSED	27	FmpSens	CLOSED	11	N2-U	CLOSED	27	PH3-Lter	CLOSED
12	Overheat	OK	28			12	SH4-D-M	CLOSED	28	Evc-CF3	CLOSED
13	H2O-Reac	OK	29	ElevIntr	NOT ACTV	13	SH4-L-M	CLOSED	29	N2-D-E-M	OPEN
14			30	ScrbFall	OK	14	N2-E	CLOSED	30	CF3-M	CLOSED
15			31	GasAlarm	OK	15	CF3	CLOSED	31	PH3-M	OPEN
16	Tube-STM	VACUUM	32	GasWarn	OK	16	N2-L-U-M	CLOSED	32		

This data sheet is provided to you on a strictly confidential basis and contains commercially sensitive and valuable information. No part of its content may be provided to any person without our prior written consent. This data sheet is not an offer capable of acceptance. The information contained in this data sheet is, to our knowledge and information, accurate, but it may contain typographical errors and we do not warrant the completeness or accuracy of the information contained herein. Any offer by you to purchase of the equipment described in this data sheet shall be subject to our standard terms and conditions of sale. The Equipment being quoted is described as used, and is being sold "AS IS, WHERE IS" with all defects, known or unknown, entirely at Buyer's own risk and reliance solely upon Buyer's own inspection of the goods and without reliance upon any representation or description by Seller or seller's representative concerning the goods.



## Digital I/O R2

Recipe status					
Recipe			StepNr		
STD6_PR7			13		

Digital Inputs					
Nr	Name	Status	Nr	Name	Status
1	NO-Press	OK	17	ProgWarn	OK
2	CA-Press	OK	18	ProgAlarm	ON
3	ExtDistC	OK	19		
4	RecPris	OK	20	ManitMod	AUTOMATIC
5	PresPris	OK	21	CntrRem	AUTOMATIC
6			22		
7	Procdtck	OK	23		
8	CalbDoors	CLOSED	24		
9	RingTmo	OK	25		
10	ExtReact	CLOSED	26		
11	TubeDoor	CLOSED	27	IFrepSens	OPEN
12	OverHeat	OK	28		
13	HQO-React	OK	29	ElevInd	NOT ACTIV
14			30	Scrfail	OK
15			31	GasAlarm	OK
16	Tube-ATM	VACUUM	32	GasWarn	OK

Digital Outputs					
Nr	Name	Status	Nr	Name	Status
1	SH4-D	CLOSED	17	PresCnfr	LOW
2	SH4-L	CLOSED	18	FastPump	OPEN
3	SH4-U	CLOSED	19	SlowPump	CLOSED
4	PH3-D	CLOSED	20	Ey-SH3	CLOSED
5	PH3-L	CLOSED	21	PH3-LH	LOW
6	PH3-U	CLOSED	22	SH4-Src	CLOSED
7	O2	CLOSED	23	O2-M	CLOSED
8	FigTmPLw	HIGH	24	Prq-CF3	CLOSED
9	N2-D	OPEN	25	Prq-SH4	CLOSED
10	N2-L	CLOSED	26	PH3-Prq	CLOSED
11	N2-U	CLOSED	27	PH3-LHcr	CLOSED
12	SH4-D-M	CLOSED	28	Evo-CF3	CLOSED
13	SH4LU-M	CLOSED	29	N2-DIE-M	OPEN
14	N2-E	OPEN	30	CF3-M	CLOSED
15	CF3	CLOSED	31	PH3-M	CLOSED
16	N2-LU-M	CLOSED	32		

## Analog I/O R1

Process Status [User: m86794] [Automatic log out after 14:57 idle] [Tool: AS11] [Tubet: LPDG294A]

Recipe					Elevator	
Recipe	STDB	PR7	Process Time	01:29:11	Position	1300
Displacement	GLOW-PUMP		Stop	4 time	Setpoint	1300
			Wait for	Gas	Speed	0

Temperature									
Paddle			Spike			Ramp		Power	
Setpoint	Actual	Deviation	Max setpoint	Setpoint	Min setpoint	Actual	To	Rate	Output
°C	°C	°C	°C	°C	°C	°C	°C	°C/min	
Zone 1	530.0	613.3	16.7	493.7	493.7	470.7	493.0	530.0	0.00
Zone 2	530.0	500.3	29.7	497.9	497.9	476.9	496.6	530.0	0.00
Zone 3	530.0	491.8	38.2	496.6	496.6	455.6	496.8	530.0	0.00
Zone 4	530.0	477.5	52.5	509.2	509.2	452.2	507.7	530.0	0.00
Zone 5	530.0	477.5	52.5	536.9	536.9	446.9	542.6	530.0	0.00
Top Zone									

Analog IO											
IO	Name	Setpoint	Actual	HL-LL	Unit	In	Name	Setpoint	Actual	HL-LL	Unit
1	3HA-D	0.00	0.00	0.30	Scm	1	Pmp-Prs	0.00	0.01	0.00	Torr
2	3H-L	0.000	0.001	0.100	Scm	2	PH3-LPrs	0.0	0.0	0.0	BarG
3	3HA-U	0.000	0.001	0.100	Scm	3	O2-Prs	0.0	2.4	0.0	BarG
4	PH-U	0	0	50	Scm	4	VH-Pos	0.0	189.3	0.0	Bar
5	PH-L	0.0	0.1	10.0	Scm	5	LeakRate	0.0	200.0	0.0	m/Torr
6	PH-U	0.0	0.1	10.0	Scm	6	Leaking	0.0	50.0	0.0	m/Torr
7	O2	0.00	0.00	0.50	Scm	7	N2Prs	1	298	0.0	Bar
8	Low-Prs	0	2000	1500	m/Torr	8	SPH-Prs	0.0	2.5	0.0	BarG

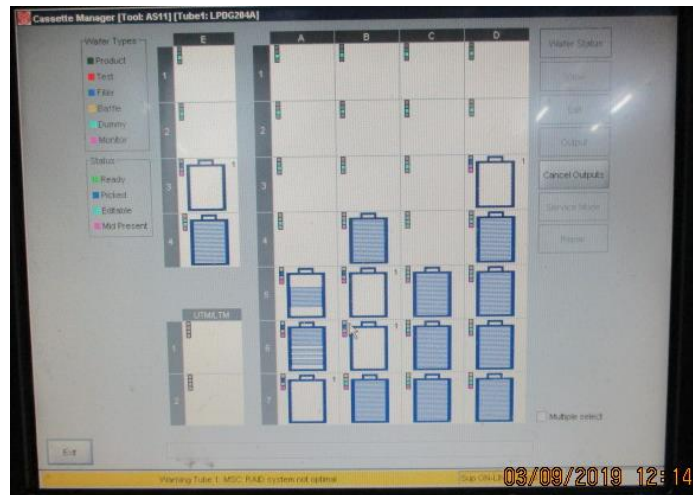
  

Analog IO											
IO	Name	Setpoint	Actual	HL-LL	Unit	In	Name	Setpoint	Actual	HL-LL	Unit
9	N2-D	0.00	0.03	0.00	Scm	9	N2-Prs	0.0	2.7	0.0	BarG
10	N2-L	0.0	0.0	0.0	Scm	10	CF3-Prs	0.0	0.1	0.0	BarG
11	N2-U	0.0	0.0	0.0	Scm	11	ATM-Prs	0	627	0	Torr
12	O2-Contr	1	1	0	PPM	12	FlngTm	60.0	67.7	0.0	sec
13	HgH-Prs	0.00	10.00	0.00	Torr	13	ATM-Setp	0	680	0	Torr
14	HG-E	0.000	0.001	0.000	Scm	14	PH3-LPrs	0.0	0.0	0.0	BarG
15	H-E	0.00	0.00	0.50	Scm	15	FlngkT	60.0	55.0	0.0	sec
16						16					

This data sheet is provided to you on a strictly confidential basis and contains commercially sensitive and valuable information. No part of its content may be provided to any person without our prior written consent. This data sheet is not an offer capable of acceptance. The information contained in this data sheet is, to our knowledge and information, accurate, but it may contain typographical errors and we do not warrant the completeness or accuracy of the information contained herein. Any offer by you to purchase of the equipment described in this data sheet shall be subject to our standard terms and conditions of sale. The Equipment being quoted is described as used, and is being sold "AS IS, WHERE IS" with all defects, known or unknown, entirely at Buyer's own risk and reliance solely upon Buyer's own inspection of the goods and without reliance upon any representation or description by Seller or seller's representative concerning the goods.



## Stoker status



## Motion part control status



## Boat setting status

### R1 Boat wafer slot setting

	Type	Wafer size (mm)	Slots	Pitch (mm)	Delta pitch (1/10000")	Offset	Lift/Drop	Distance	Calibration	Depth	Warning space	Max space	Warning slit	Max slit	Phys. space
Boat A	300mm120	300	120	3006	0	1000	150	100	90	100	225	250	80	100	130
Boat B	300mm120	300	120	3006	0	1000	150	100	90	100	225	250	80	100	130
Boat C	None														

This data sheet is provided to you on a strictly confidential basis and contains commercially sensitive and valuable information. No part of its content may be provided to any person without our prior written consent. This data sheet is not an offer capable of acceptance. The information contained in this data sheet is, to our knowledge and information, accurate, but it may contain typographical errors and we do not warrant the completeness or accuracy of the information contained herein. Any offer by you to purchase of the equipment described in this data sheet shall be subject to our standard terms and conditions of sale. The Equipment being quoted is described as used, and is being sold "AS IS, WHERE IS" with all defects, known or unknown, entirely at Buyer's own risk and reliance solely upon Buyer's own inspection of the goods and without reliance upon any representation or description by Seller or seller's representative concerning the goods.

## R2 Boat wafer slot setting

Type	Wafer size (mm)	Slots	Pitch ( 1/10000" )	Delta pitch ( 1/10000" )	Offset	Lift/Drop	Distance	Calibration	Depth	Warning space	Max space	Warn lit	Max lit	Stop space	
Boat A	300mm(120)	300	120	3006	0	1000	150	100	90	100	225	250	80	100	130
Boat B	300mm(120)	300	120	3006	0	1000	150	100	90	100	225	250	80	100	130
Boat C	None														

## Alarm log

Event Reporting - AS11 / LPDG284A (1) [Tool: AS11] [Tube: LPDG284A]

Start time: 19-08-31 / 00:00:00 End time: 19-09-01 / 23:59:59

Date/Time	Source	Text
19-08-31 / 04:26:58	MSC1	GEM alarm cleared
19-08-31 / 04:26:59	BTC1	ALARM <OFF> Reactor Carousel O2 closed loop
19-08-31 / 04:26:59	MSC1	GEM alarm cleared
19-08-31 / 04:26:58	BTC1	ALARM <OFF> Tube 2 maintenance door open
19-08-31 / 07:21:36	DPC1	UCOAT530 21 LEAKCHECK-LOW 00:53:36 ALARM <ON> Analog input #5 LeakRate
19-08-31 / 07:22:22	MSC1	GEM alarm detected
19-08-31 / 07:36:43	DPC1	UCOAT530 24 PUMP_LR-FAIL 01:08:43 ALARM <OFF> Analog input #5 LeakRate
19-08-31 / 07:37:22	MSC1	GEM alarm cleared

Current event date: Current event nr: Number of events: 5

Buttons: Edit, Export, Mark, Unmark

Warning: Tube 2 MSC RAD system not optimal

03/09/2019 12:15

## Alarm log

Event Reporting - AS11 / LPDG284B (2) [Tool: AS11] [Tube: LPDG284B]

Start time: 19-08-31 / 00:00:00 End time: 19-09-01 / 23:59:59

Date/Time	Source	Text
19-08-31 / 03:09:21	MSC2	GEM alarm detected
19-08-31 / 03:09:21	BTC2	ALARM <On> Tube 2 maintenance door open
19-08-31 / 03:25:47	MSC2	GEM alarm cleared
19-08-31 / 03:25:47	BTC2	ALARM <OFF> Tube 2 maintenance door open
19-08-31 / 05:02:28	MSC2	GEM alarm detected
19-08-31 / 05:02:28	BTC2	ALARM <ON> Reactor Carousel O2 closed loop
19-08-31 / 05:11:11	BTC2	ALARM <OFF> Reactor Carousel O2 closed loop
19-08-31 / 05:11:22	MSC2	GEM alarm cleared
19-09-01 / 09:52:39	MSC2	GEM alarm cleared
19-09-01 / 09:52:39	DPC2	STDB_PR7 04 SLOW-PUMP 00:12:05 ALARM <OFF> Communication error DPC/MHC
19-09-01 / 15:39:35	MSC2	ALARM <ON> Communication error MSC/DPC
19-09-01 / 15:39:35	MSC2	GEM alarm detected
19-09-01 / 15:41:01	MSC2	GEM alarm cleared
19-09-01 / 15:41:00	MSC2	ALARM <OFF> Communication error MSC/DPC

Current event date: Current event nr: Number of events: 14

Buttons: Edit, Export, Mark, Unmark

Warning: Tube 2 MSC RAD system not optimal

03/09/2019 12:16

This data sheet is provided to you on a strictly confidential basis and contains commercially sensitive and valuable information. No part of its content may be provided to any person without our prior written consent. This data sheet is not an offer capable of acceptance. The information contained in this data sheet is, to our knowledge and information, accurate, but it may contain typographical errors and we do not warrant the completeness or accuracy of the information contained herein. Any offer by you to purchase of the equipment described in this data sheet shall be subject to our standard terms and conditions of sale. The Equipment being quoted is described as used, and is being sold "AS IS, WHERE IS" with all defects, known or unknown, entirely at Buyer's own risk and reliance solely upon Buyer's own inspection of the goods and without reliance upon any representation or description by Seller or seller's representative concerning the goods.



## PTW ASIA PTE LTD



All Equipment is offered subject to prior sale. This item will be quoted based upon specific terms and configuration required. Interested parties may contact PTW Asia Pte Ltd at:

[ask@ptwsingapore.com](mailto:ask@ptwsingapore.com)

Visit our web site at [www.ptwsingapore.com](http://www.ptwsingapore.com) © 2019 PTW ASIA PTE LTD.

This data sheet is provided to you on a strictly confidential basis and contains commercially sensitive and valuable information. No part of its content may be provided to any person without our prior written consent. This data sheet is not an offer capable of acceptance. The information contained in this data sheet is, to our knowledge and information, accurate, but it may contain typographical errors and we do not warrant the completeness or accuracy of the information contained herein. Any offer by you to purchase of the equipment described in this data sheet shall be subject to our standard terms and conditions of sale. The Equipment being quoted is described as used, and is being sold "AS IS, WHERE IS" with all defects, known or unknown, entirely at Buyer's own risk and reliance solely upon Buyer's own inspection of the goods and without reliance upon any representation or description by Seller or seller's representative concerning the goods.